

1st Euro.net

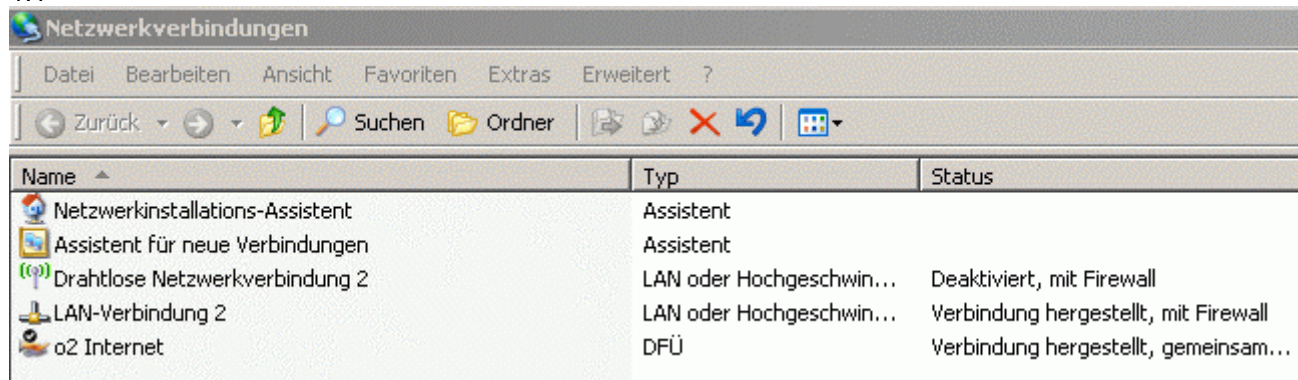


Internet since 1997
[Http://1stEuro.Net](http://1stEuro.Net)

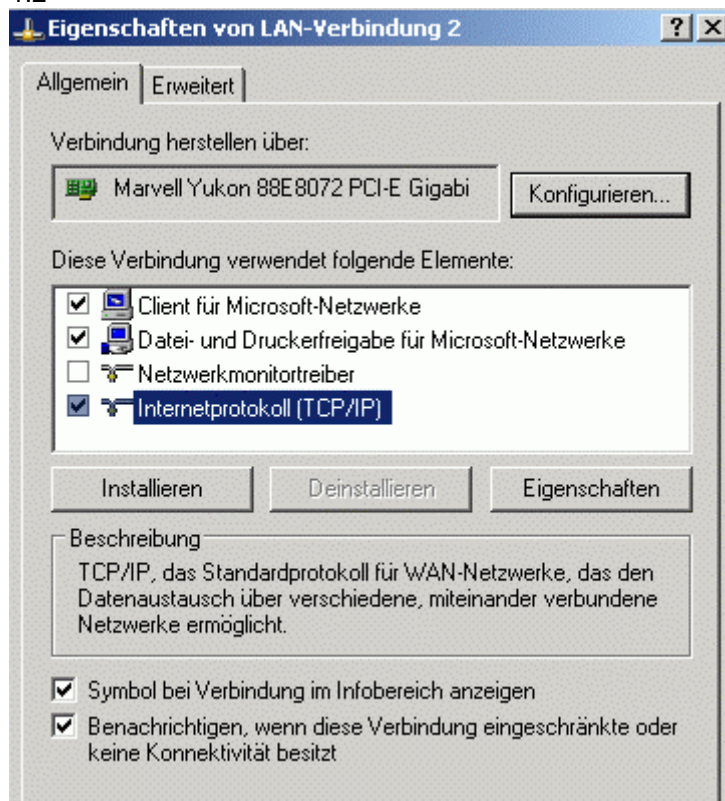
2011-04-24 WinXP funktionierende Einstellung mit Notebooks über Switch
NB1 = HP6830s mit USB-UMTS-Stick <-> Lan <-> Switch <-> Lan <-> NB2 = Fujitsu
Zu beachten sind die Netzwerkeinstellungen und IPs bei der Lan-Verbindung.

1) LAN-Einstellungen beim HP6830s

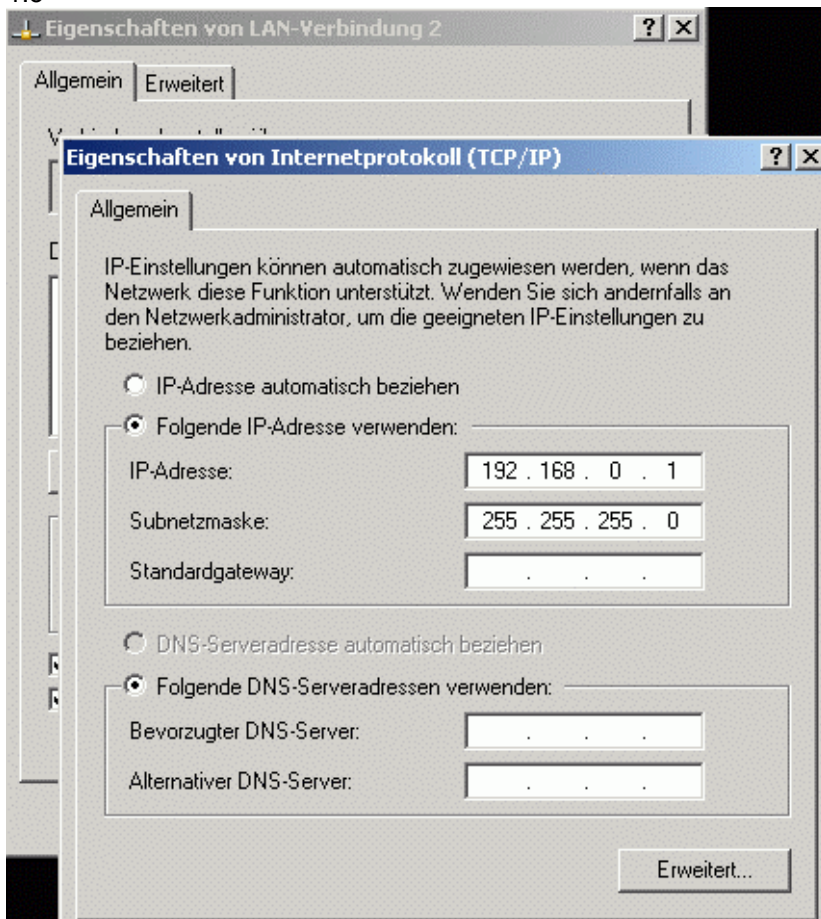
1.1



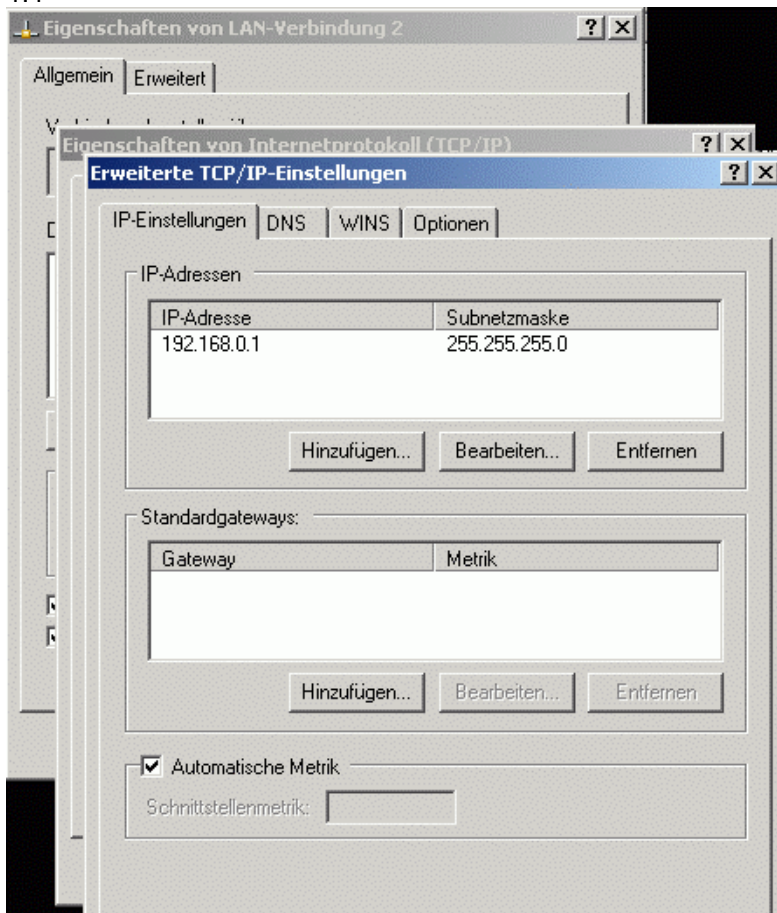
1.2



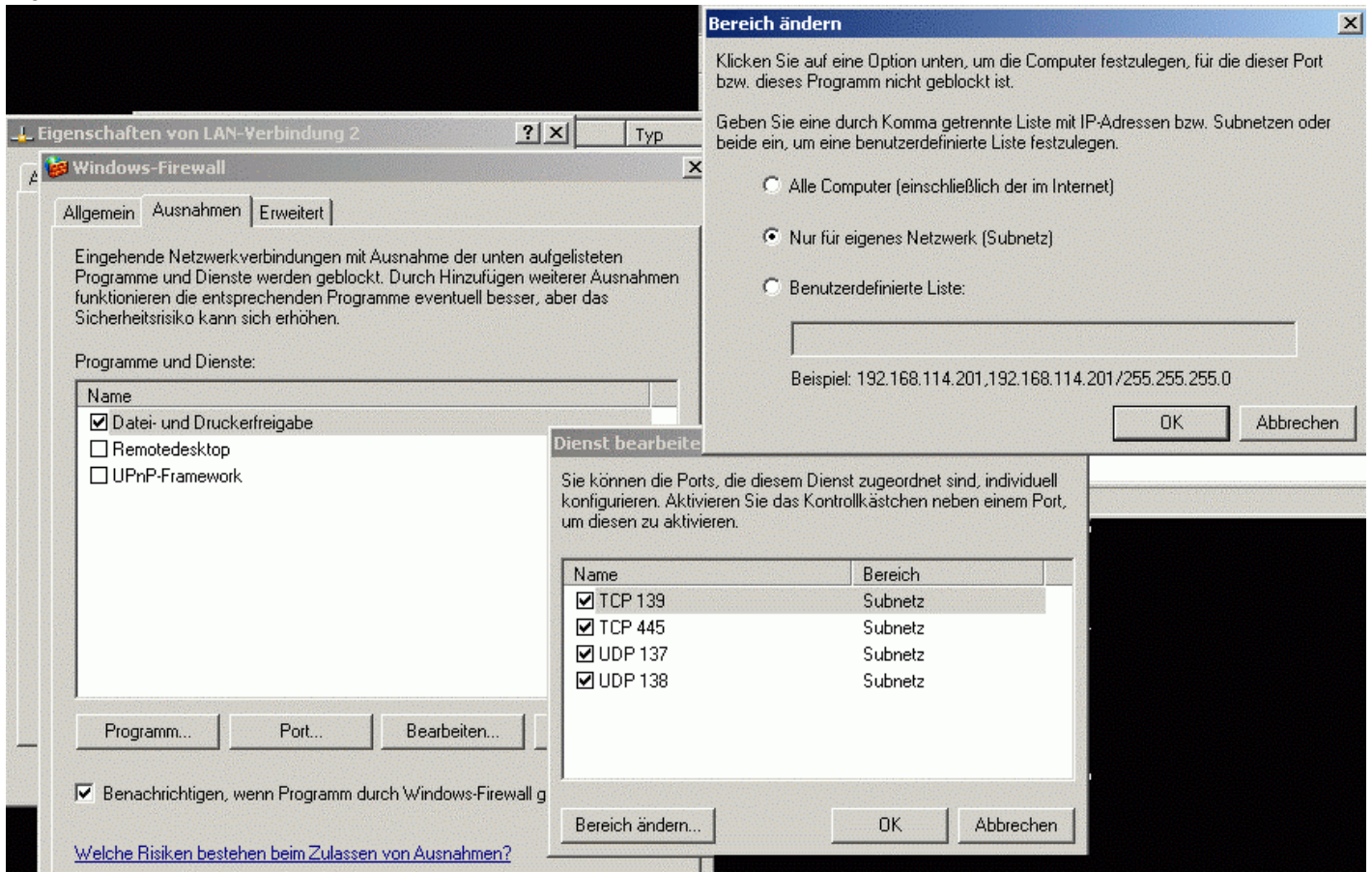
1.3



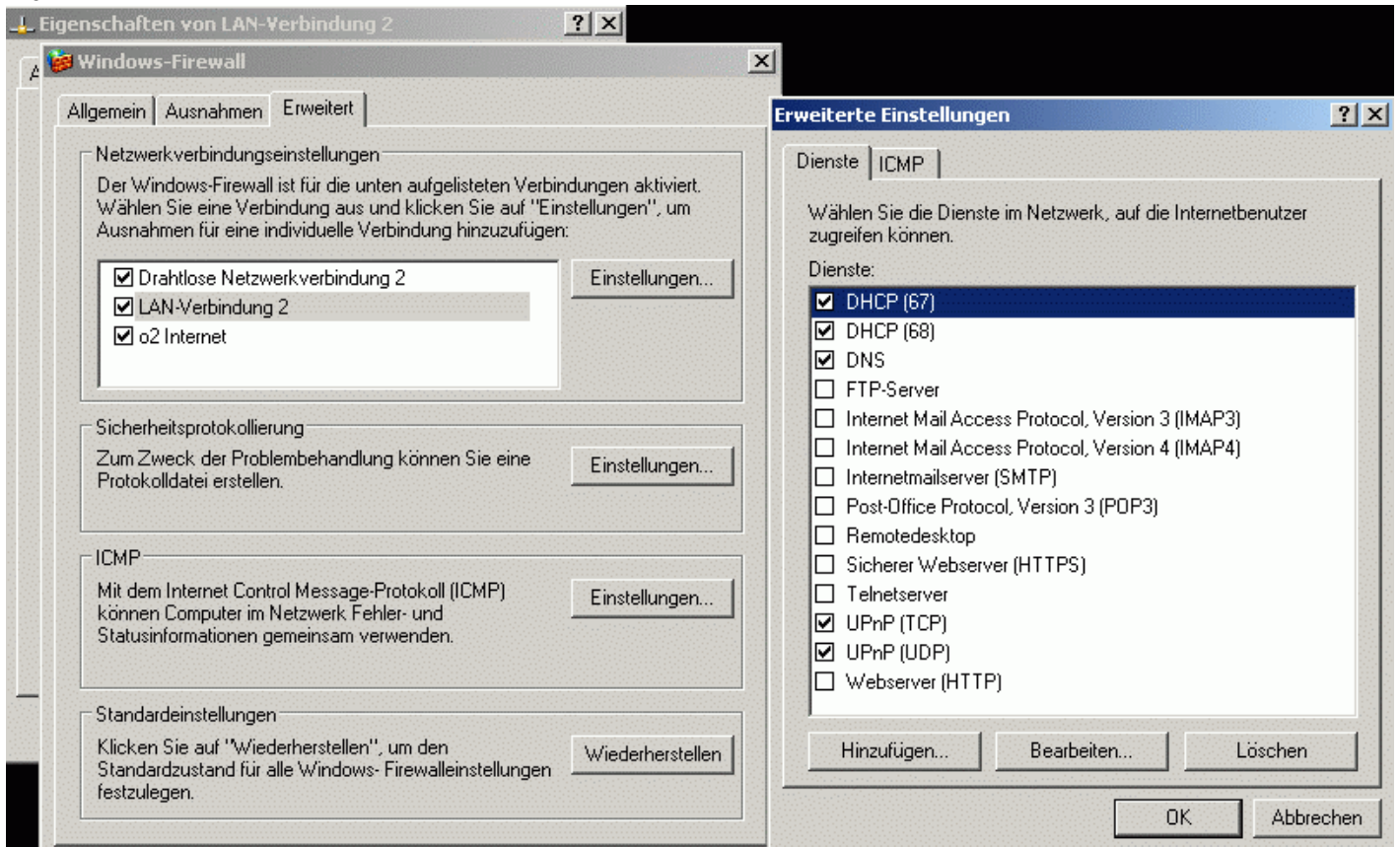
1.4



1.5

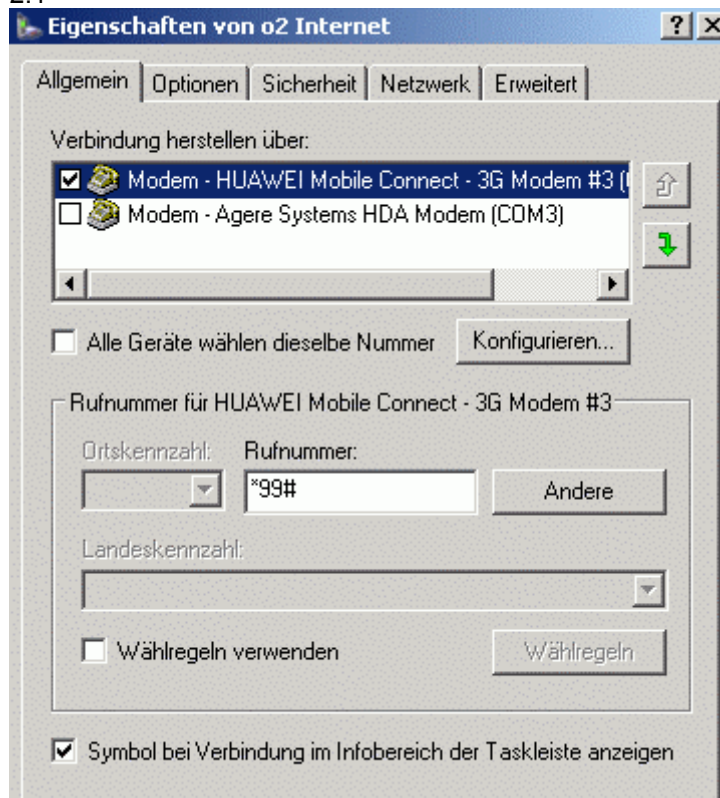


1.6

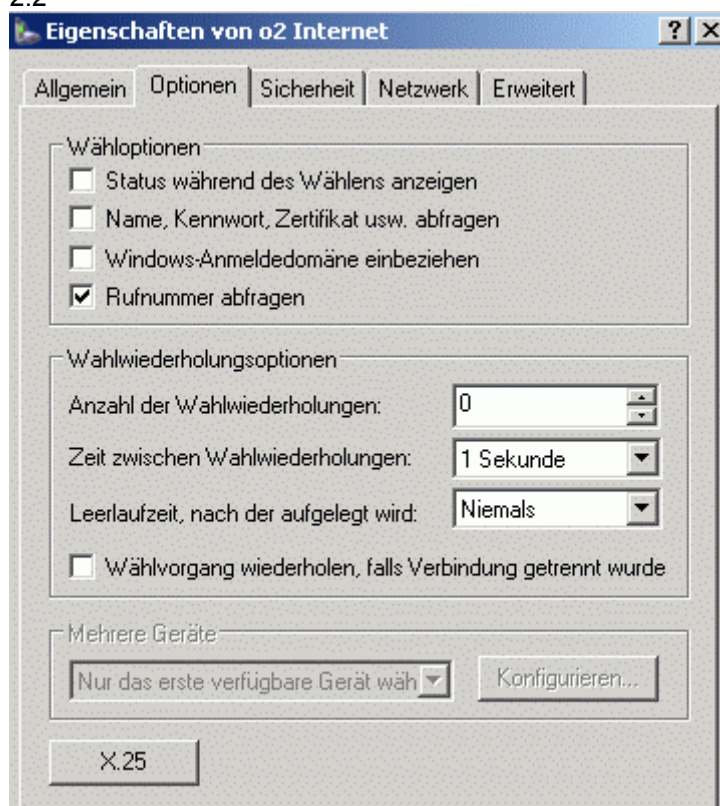


2) UMTS-(DFÜ-) Einstellungen bei HP6830s

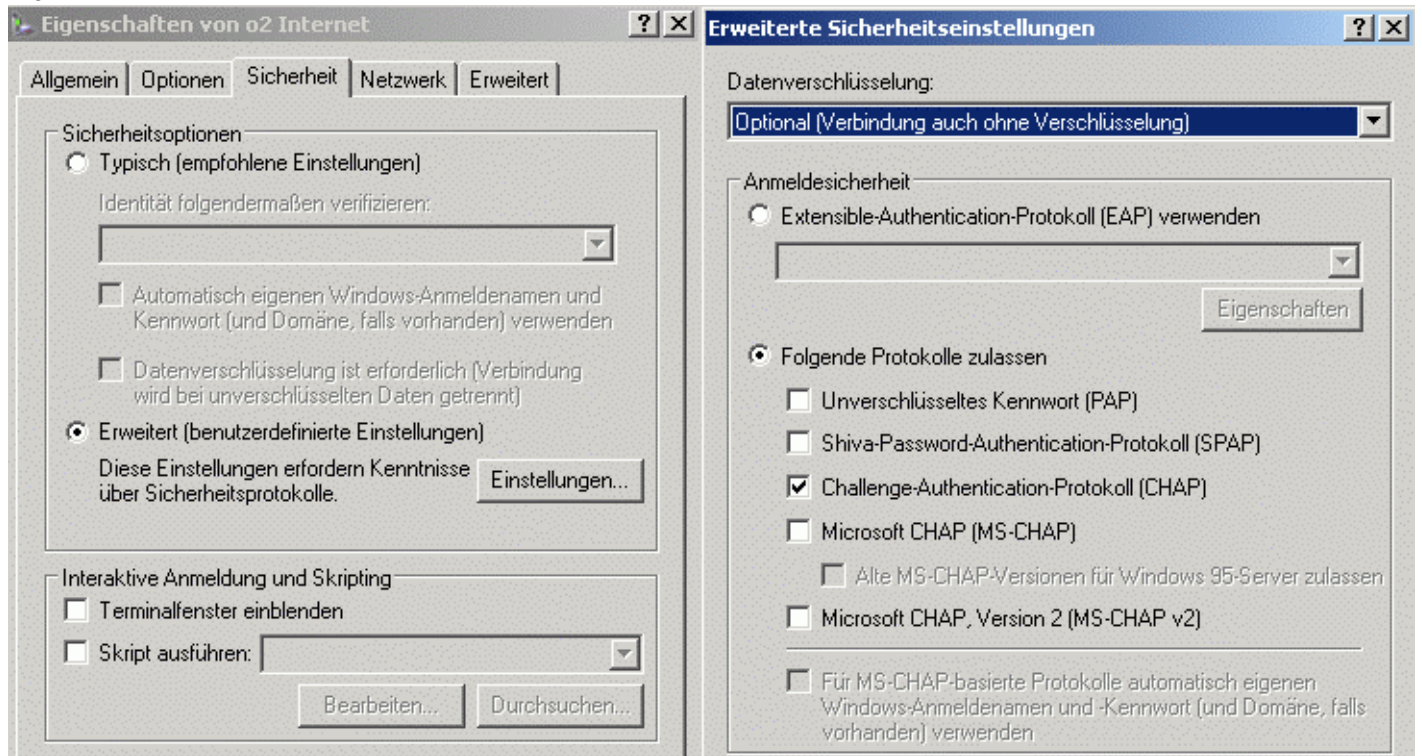
2.1



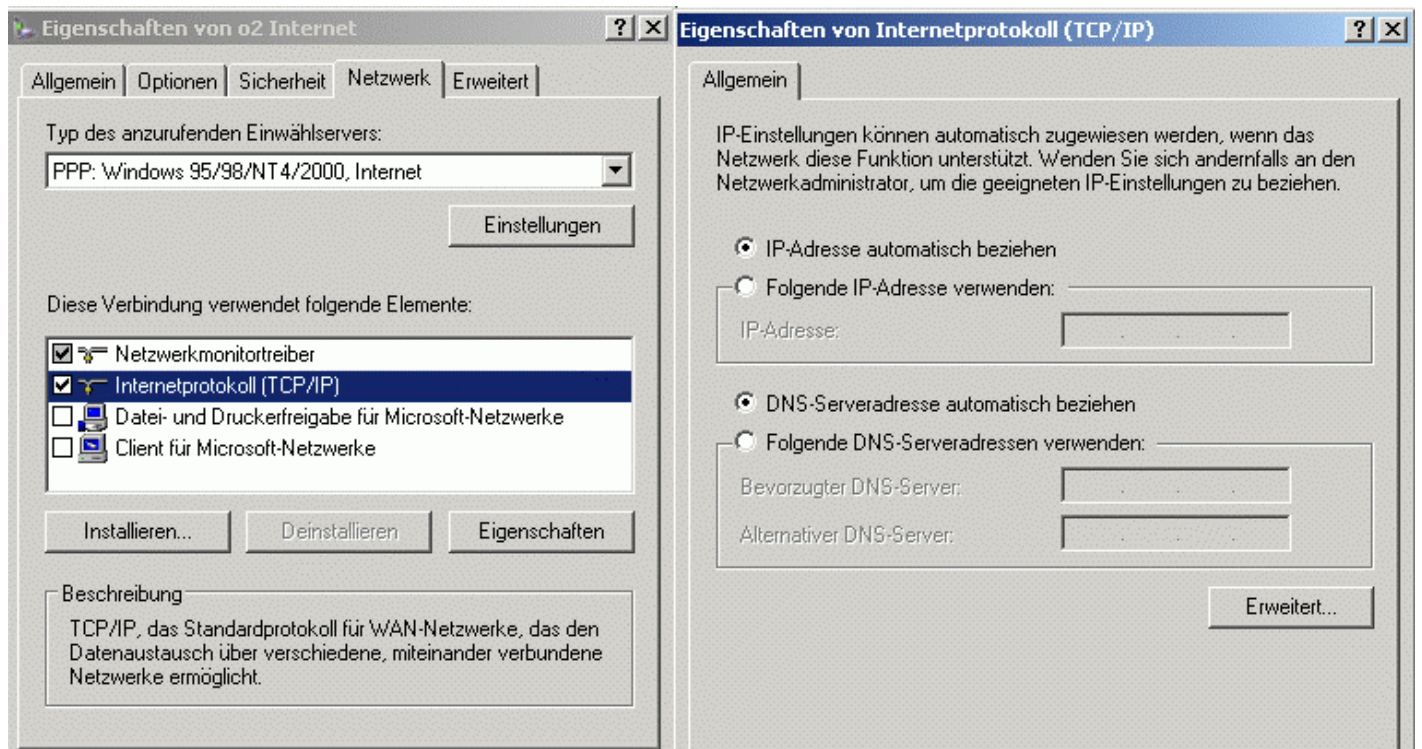
2.2



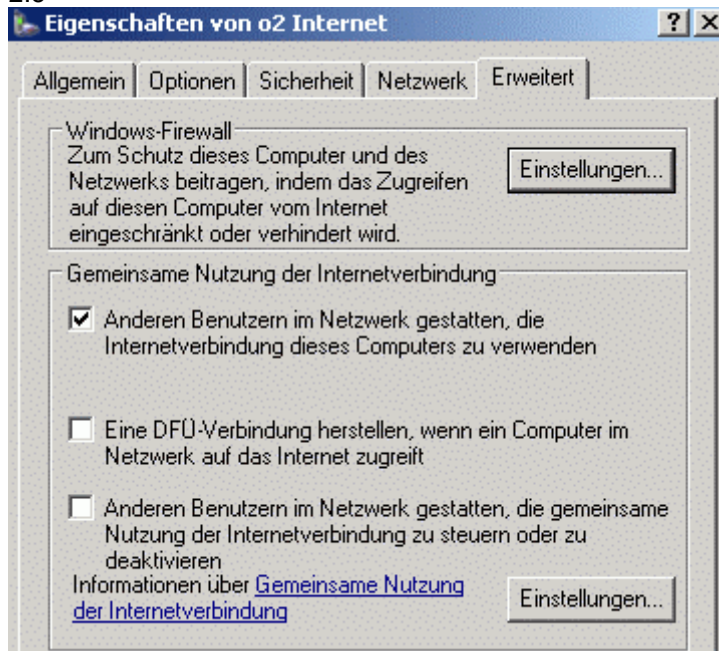
2.3



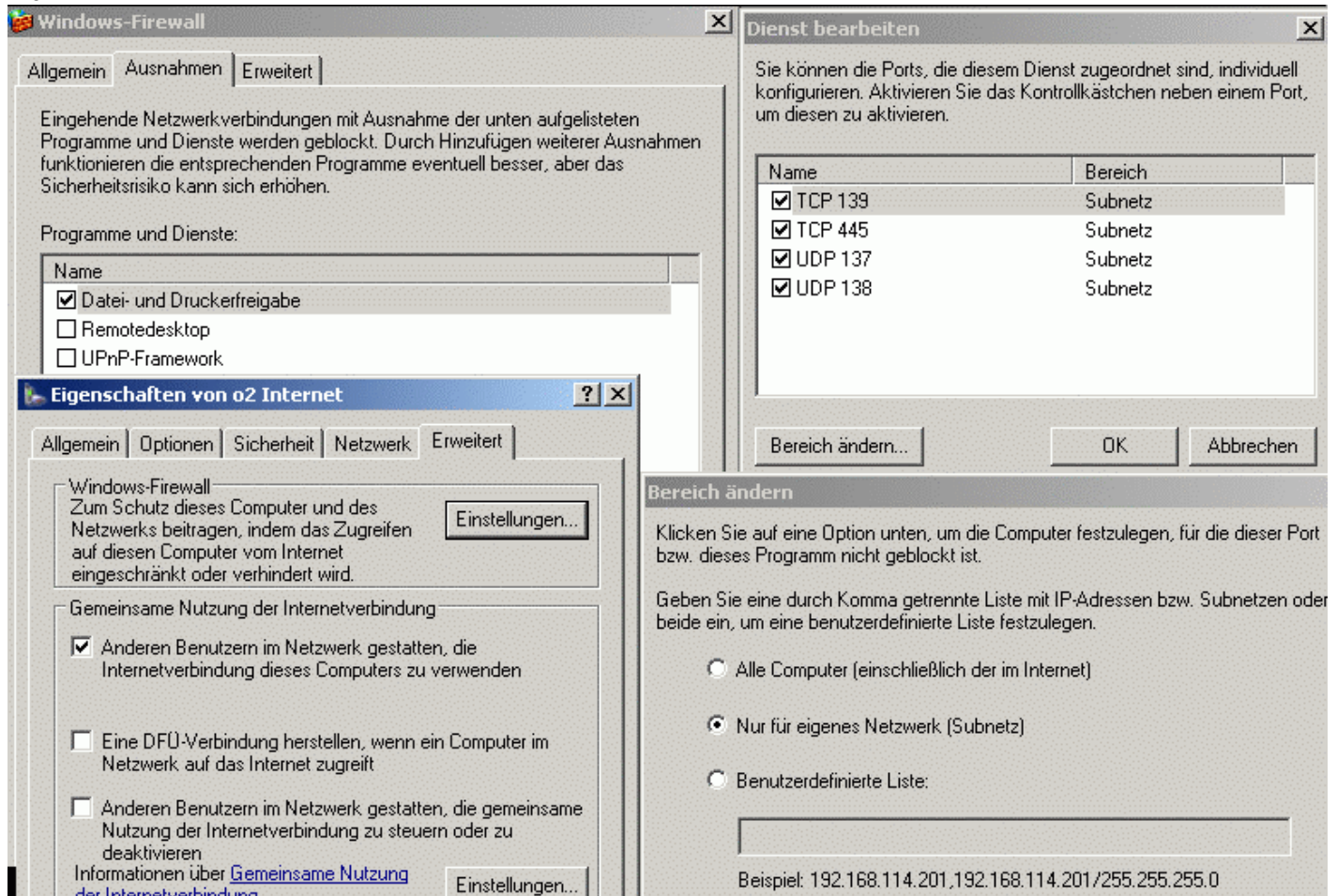
2.4



2.5

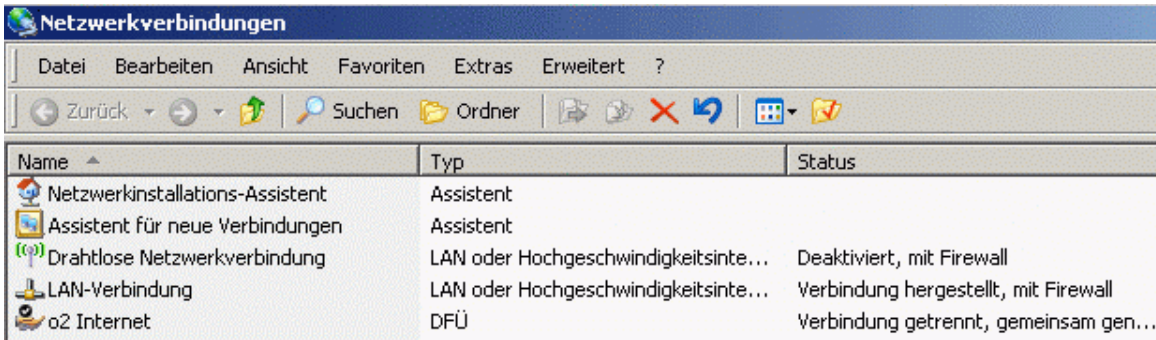


2.6

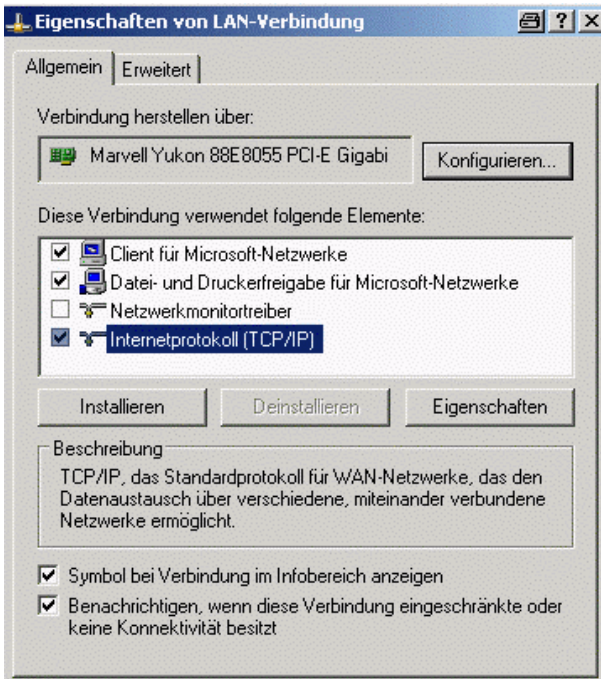


3) LAN-Einstellungen beim Fujitsu

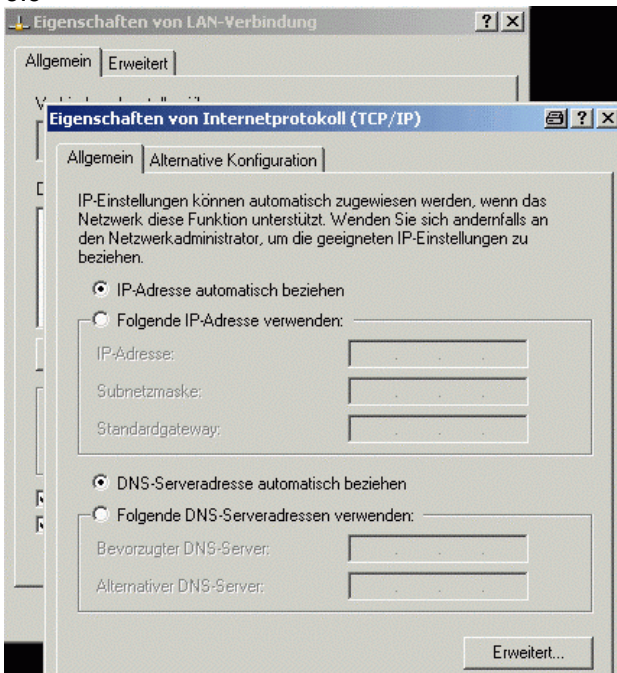
3.1



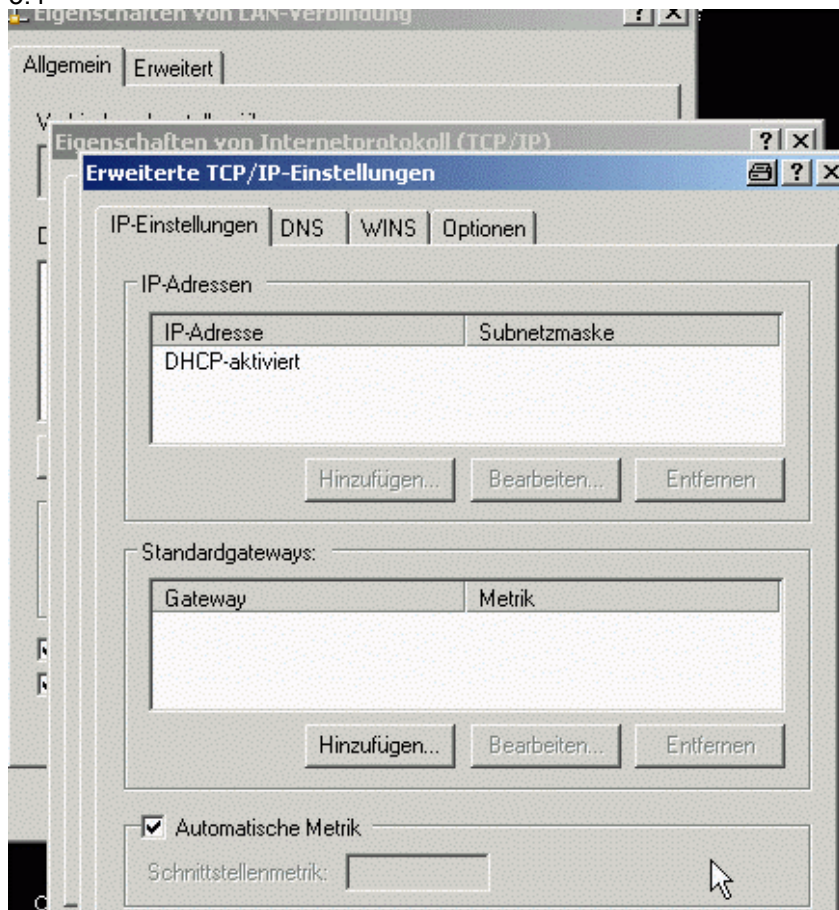
3.2



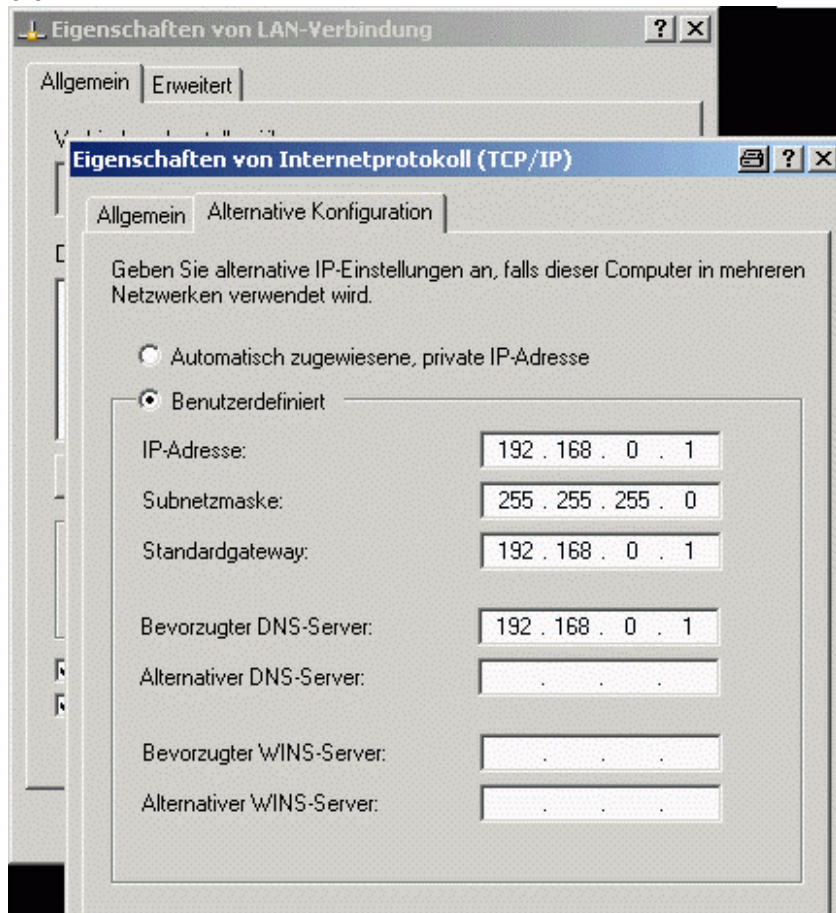
3.3



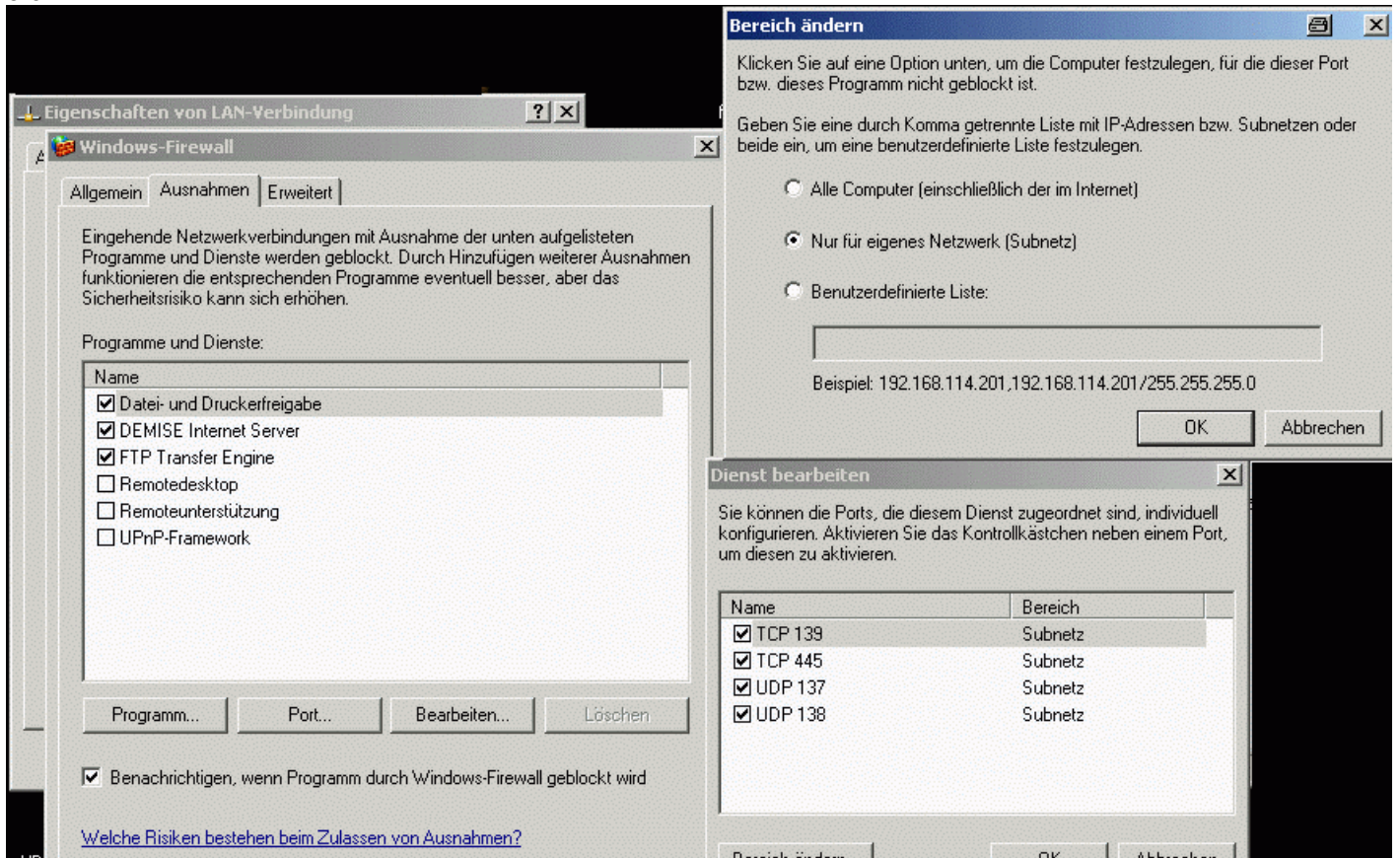
3.4



3.5



3.6



3.7

